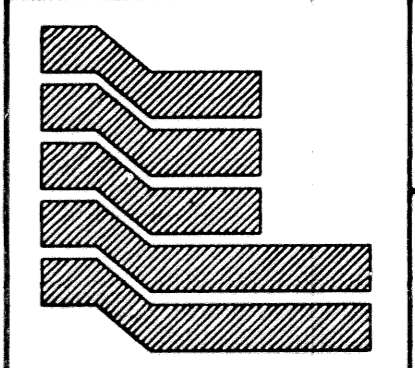
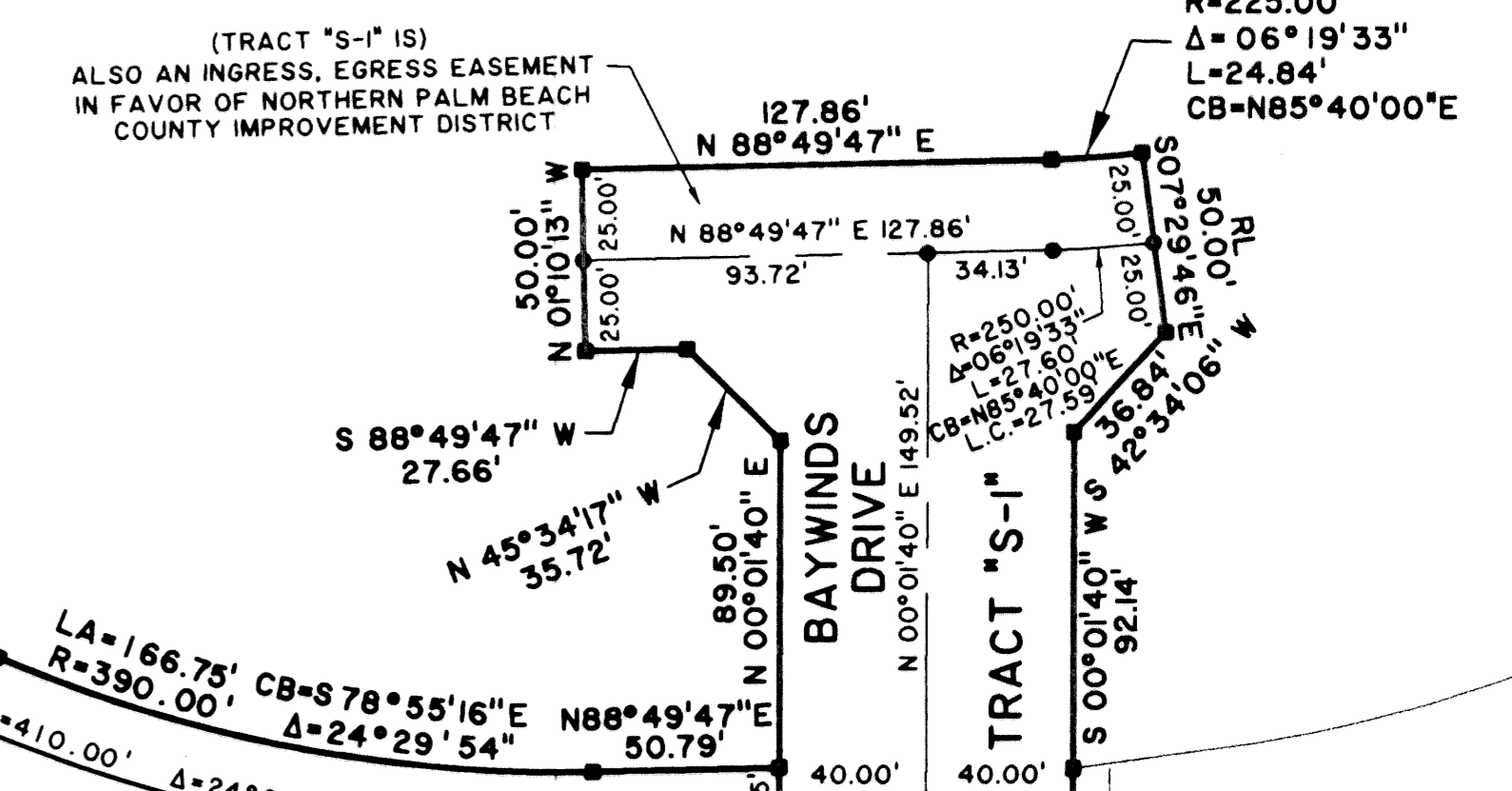
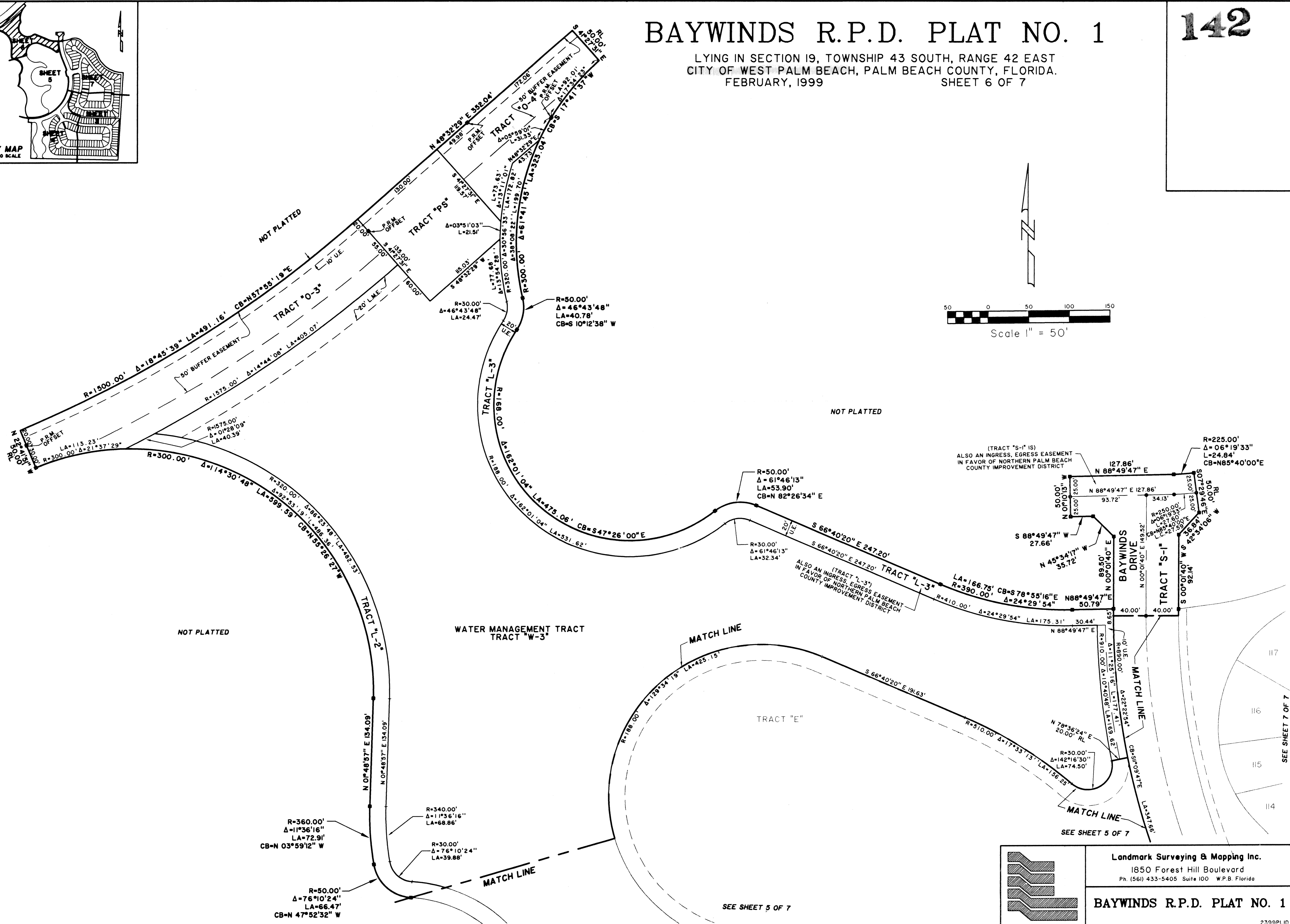
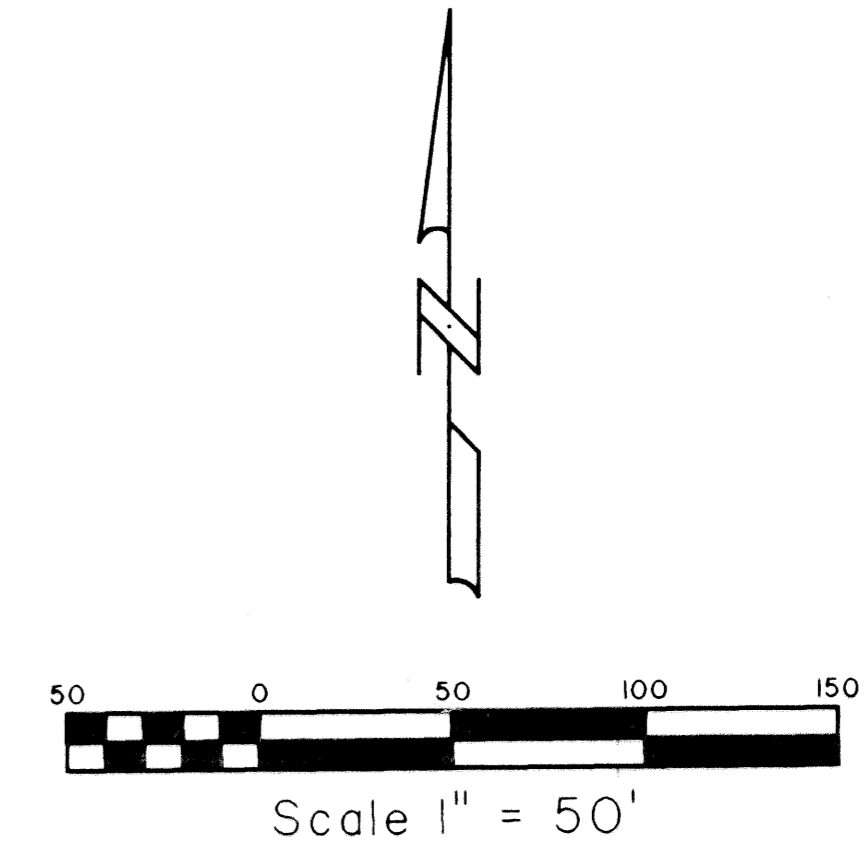
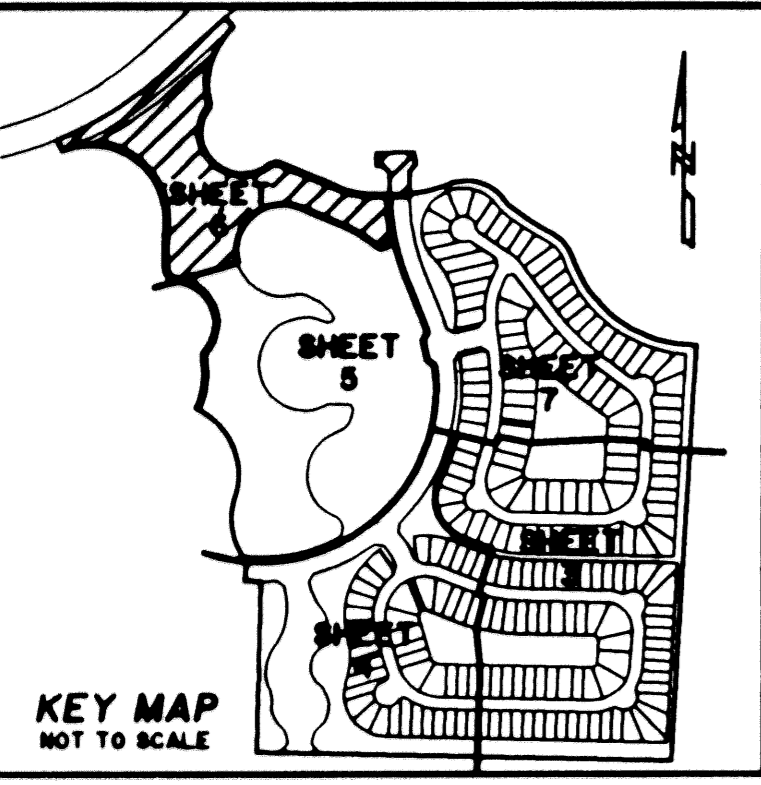


# BAYWINDS R.P.D. PLAT NO. 1

LYING IN SECTION 19, TOWNSHIP 43 SOUTH, RANGE 42 EAST  
CITY OF WEST PALM BEACH, PALM BEACH COUNTY, FLORIDA.  
FEBRUARY, 1999 SHEET 6 OF 7



Landmark Surveying & Mapping Inc.  
1850 Forest Hill Boulevard  
Ph. (561) 433-5405 Suite 100 W.P.B. Florida  
**BAYWINDS R.P.D. PLAT NO. 1**

TAB 86A